



OPERATING INSTRUCTIONS

SMARTCAM DOOR LOCK

Electronic door lock for safe interiors, bases and compartment blocks

Many thanks!

Many thanks for choosing Waldis to give you the security you want.

The safe you have decided to purchase is a product tested in compliance with the EN1143-1 standard. A Swiss quality product with security tested by the VdS (German Association of Indemnity Insurers).

Before starting to use your strongbox, please read these instructions thoroughly!

Your contact in case of questions:

WALDIS Tresore AG

Hofwissenstrasse 20

CH-8153 Rümlang

Telephone: +41 43 211 12 00

Fax: +41 43 211 12 12

Email: info@tresore.ch

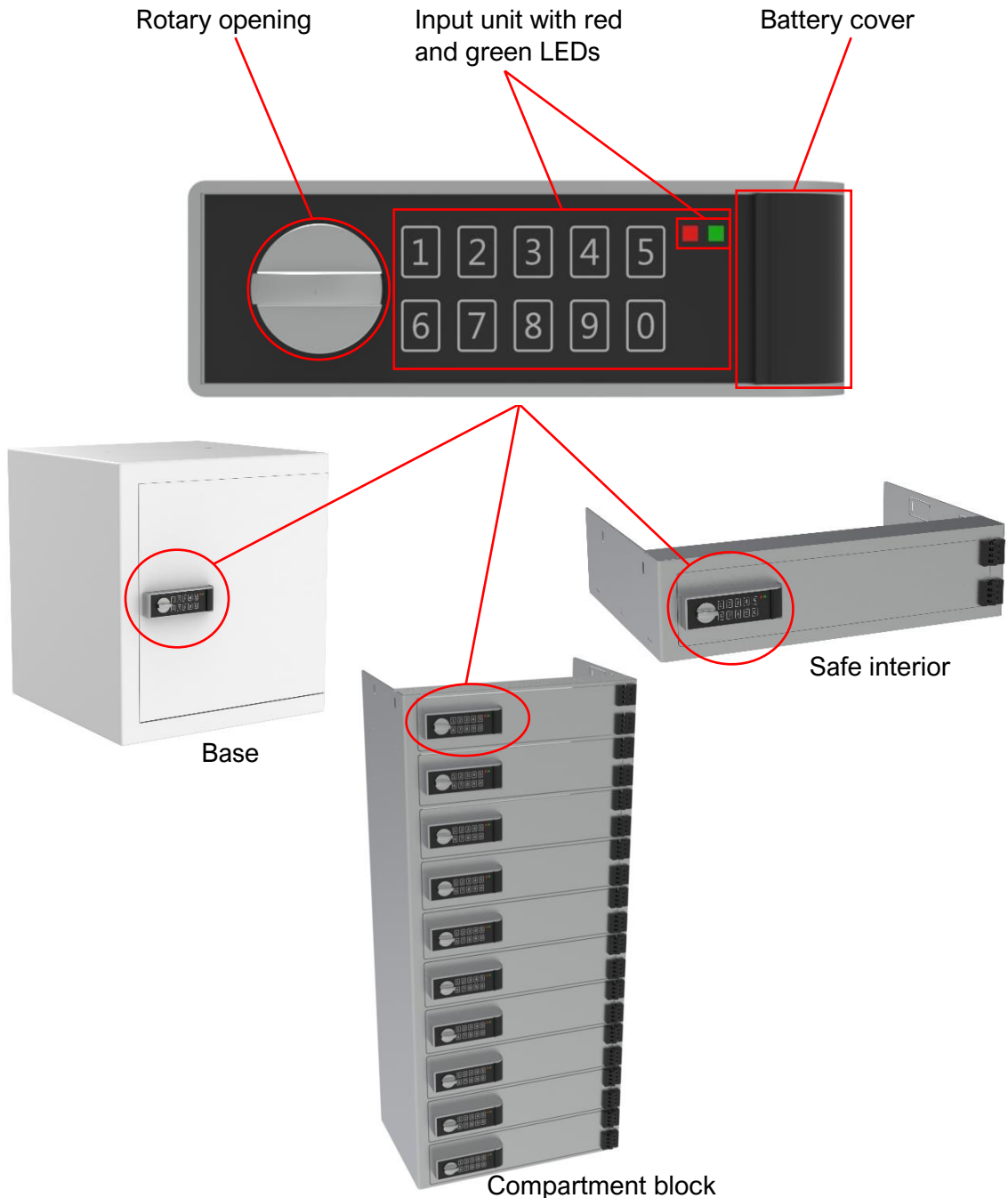
Table of contents

1. Overview	1
1.1. Operating controls.....	1
2. Starting to use your safe interior	2
3. Operation	3
3.1. Opening with the user code.....	3
3.2. Opening with the master code	3
3.3. Locking the safe interior	4
3.4. Reprogramming codes	5
3.5. Replacing the battery.....	6
4. Malfunctions.....	7
4.1. Battery.....	7
4.2. Tamper block	7
5. Basic rules for secure codes.....	7

1. Overview

The SmartCam is mounted on safe interiors, bases and compartment blocks that are installed as options in or under the WA safe. The SmartCam is a non-certified lock.

1.1. Operating controls



NOTE: These operating instructions describe how to handle a safe interior; in each case, they show a version with the hinge on the right-hand side of the door. If you have a safe interior with the hinge on the left-hand side of the door, you need to perform all the turning, opening and closing movements in the opposite direction!

2. Starting to use your safe interior

As soon as the safe interior, base or compartment block has been delivered and correctly installed, you can start operating the lock.

To do so, please keep to the following procedure:

1. Using the lug positioned on the left of the battery cover, carefully push the battery cover to the right, out of the input unit housing.



2. Connect the 9V ALKALINE block battery to the cable located in the housing of the input unit, and push the battery into the housing from the right.

Push the cable above the battery into the housing.



3. Carefully push the battery cover into the input unit housing again, towards the left.

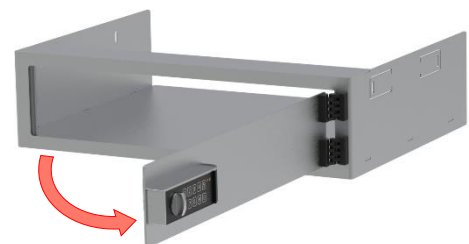
Avoid jamming the cable!



4. Enter the factory user code (1-1-1-1) and turn the rotary opening handle clockwise by 90° to reach the end position.



5. Open the door.



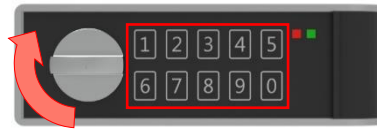
6. Programme the new code as per section 3.3.

3. Operation

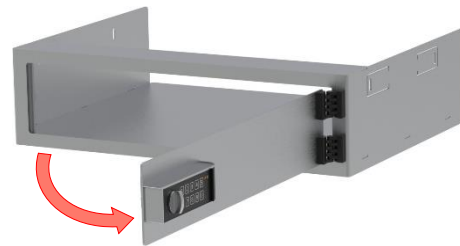
3.1. Opening with the user code

To open the safe interior, please keep to the following procedure:

1. Enter the user code and within 3 seconds **after** you hear the triple acoustic signal and see the green LED light up, turn the rotary opening handle clockwise by 90° into the "open" position.



2. Open the door.



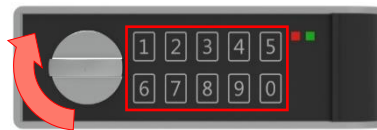
3.2. Opening with the master code

To open the safe interior, please keep to the following procedure:

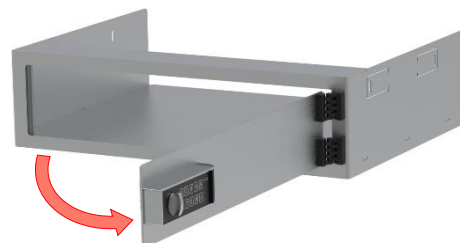
1. On the input unit, press the "8" key for 3 seconds, when the key is released, the green LED lights up continuously.



2. Enter the master code and within 3 seconds turn the rotary opening handle clockwise by 90° into the "open" position.



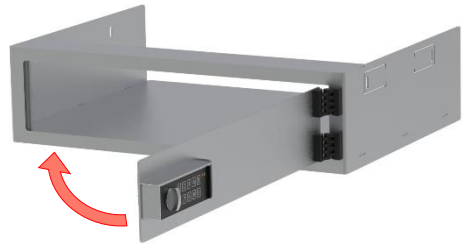
3. Open the door.



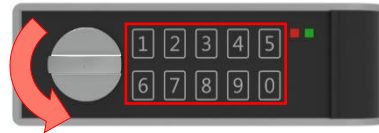
3.3. Locking the safe interior

To close the safe interior, please keep to the following procedure:

1. Close the door (rotary opening handle in "open" position).



2. Press any numeric key once and turn the rotary opening handle counterclockwise by 90° into the "closed" position (the lock closes automatically).



3. **Gently** turn the rotary opening handle clockwise to check whether the lock – and therefore the safe interior – are closed.



3.4. Reprogramming codes



NOTE: A new code must always be programmed with the door open, and it must be tested!

It is a mandatory requirement to reprogramme the **master code (1 2 3 4 5 6)** and the **user code (1 1 1 1)**, because they could be known to a third party!

What the acoustic and LED signals mean

1x signal with red LED:	Input accepted
3x signal with green LED:	Code is correct
Long signal with red LED:	Code is incorrect / input took too long
Green LED is lit continuously:	Code change can be performed

Procedure for the master code:

1. Open the door with the current user code (section 3.1.).
2. Leave the rotary opening handle in the "open" position.
3. On the input unit, press the "2" key for 3 seconds until a double acoustic signal sounds and the red LED lights up twice. Then release the "2" key, and the green LED should be lit continuously.
4. Enter the current master code (triple acoustic signal with red LED).
5. Enter the new master code (triple acoustic signal with red LED).
6. Enter the new master code again to confirm it (triple acoustic signal with red LED).
7. The green LED goes out to show that the new master code has been programmed.
8. With the **door open**, press any numeric key and turn the rotary opening handle counterclockwise into the "closed" position (lock closes automatically).
9. Press the "8" key until a double acoustic signal sounds and the red LED lights up twice. The green LED should be lit continuously after this.
10. Enter the new master code and turn the rotary opening handle clockwise.
11. If the test opening of the lock was successful, the new code has been programmed and the safe interior can be closed (section 3.2.).

Procedure for the user code:

1. Open the door with the current user code (section 3.1.).
2. Leave the rotary opening handle in the "open" position.
3. On the input unit, press the "0" key for 3 seconds until a double acoustic signal sounds and the red LED lights up twice. Then release the "0" key, and the green LED should be lit continuously.
4. Press the "1" key once; a triple acoustic signal will sound with the red LED; the green LED should still be lit.
5. Enter the current user code (triple acoustic signal with red LED).
6. Enter the new user code (triple acoustic signal with red LED).
7. Enter the new user code again to confirm it (triple acoustic signal with red LED).

8. The green LED goes out to show that the new user code has been programmed.
9. With the **door open**, press any numeric key and turn the rotary opening handle counterclockwise into the "closed" position (lock closes automatically).
10. Enter the new user code and within 3 seconds **after** you hear the triple acoustic signal and see the green LED light up, turn the rotary opening handle clockwise.
11. If the test opening of the lock was successful, the new user code has been programmed and the safe interior can be closed (section 3.2.).



NOTE: If errors occur when making the change or if there is a break of more than 10 seconds, the old code remains valid. You must start the programming procedure from the beginning again.

3.5. Replacing the battery

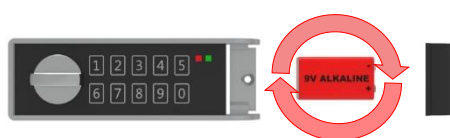
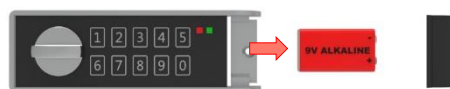
If it is necessary to replace the battery (section 4.1.), keep to the following procedure:

1. Purchase a battery (9V ALKALINE block battery)
2. Using the lug positioned on the left of the battery cover, carefully push the battery cover to the right, out of the input unit housing.
3. Carefully pull the old 9V ALKALINE block battery out of the input unit housing towards the right, and detach it from the cable.
4. Connect the new 9V ALKALINE block battery to the cable and push the battery into the housing from the right.

Push the cable above the battery into the housing.

5. Carefully push the battery cover into the input unit housing again, towards the left.

Note the expiration date!



Avoid jamming the cable!



4. Malfunctions

4.1. Battery

If there is insufficient battery voltage, a warning signal will sound several times in succession after you enter the code, and the red LED will also flash intermittently.

If you observe the warnings just mentioned, the 9 V block battery for the lock must be replaced as quickly as possible (section 3.4.).

4.2. Tamper block

After 4 invalid code inputs in succession, the keypad is blocked for 1 minute. During this lockout time, the red LED lights up once every 10 seconds, and no code can be entered.

If two more incorrect codes are entered again after the lockout time has elapsed, the lockout time of 1 minutes will start again. The lockout time ends as soon as the valid code has been entered correctly.

5. Basic rules for secure codes

What you should avoid:

- Don't use commonplace sequences such as 0000 or 1234.
- Don't use your own birthday, or any car registration numbers or phone numbers.
- Don't use a code that you already use elsewhere.

How should a code be structured?

- The code should not have a logical structure.
- Use all the keys, as far as possible (the keypad shows signs of wear over time, revealing the individual numbers used in the code).

Keeping a code secure:

- A code is only secure if it stays secret!
- You should memorise codes – don't write them down.
- Think how the code would still be kept available in case the person who has it is no longer able to disclose it (e.g. if they die). Deposit a sealed envelope with your notary.



NOTE: If the code has been forgotten or can no longer be reconstructed, the safe interior must be drilled open and repaired or replaced at the owner's expense!